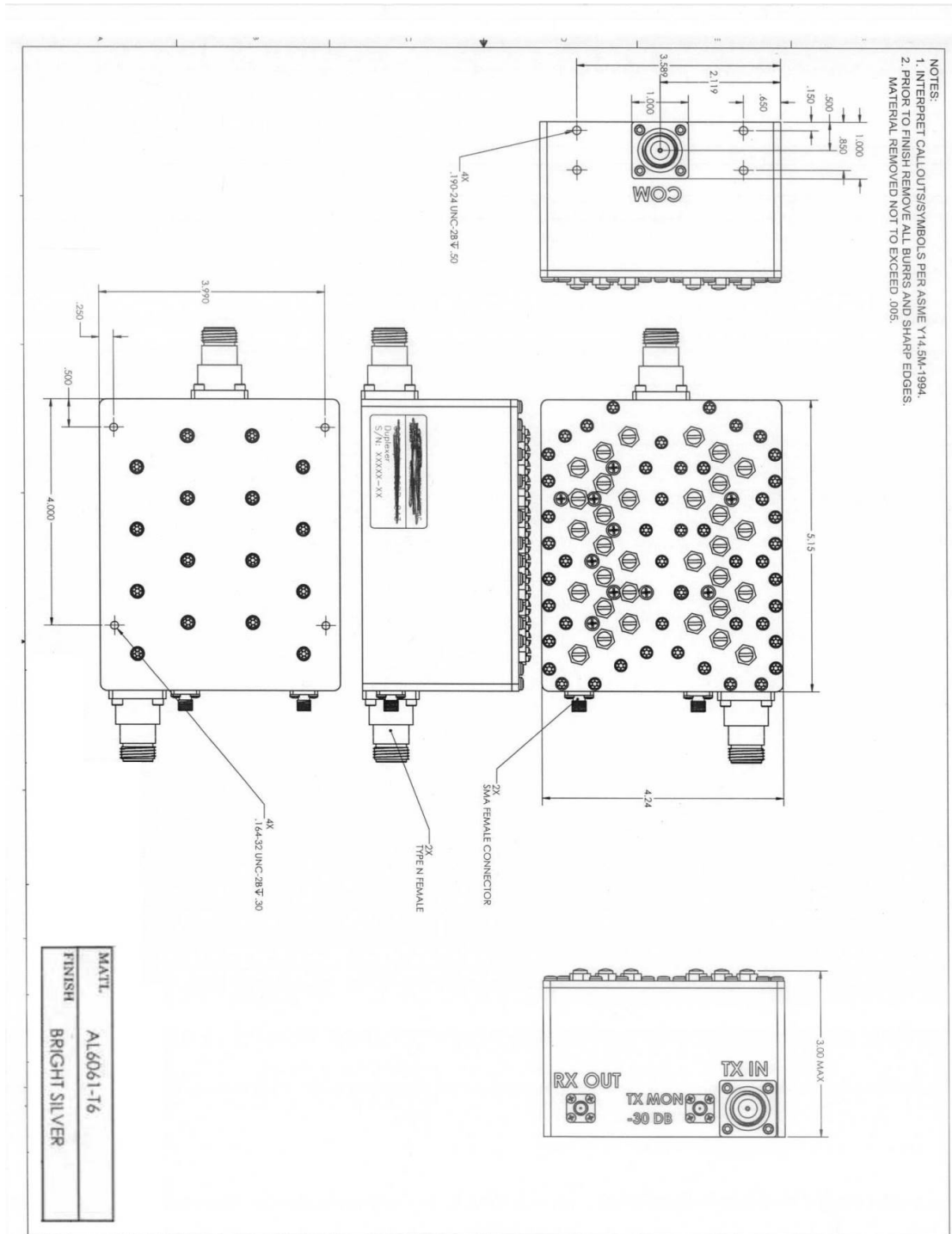


HD34207

Cavity Duplexer



[Mechanical 2D Drawing]

338 Jericho Tpke. Ste 387, Syosset, NY 11791

Tel: (631) 588-3877 Email: sales@hdc.com

© COPYRIGHT 2008-2023 HD Communications Corp.

All rights reserved. Redistribution or republication of these pages in any form requires express written consent.



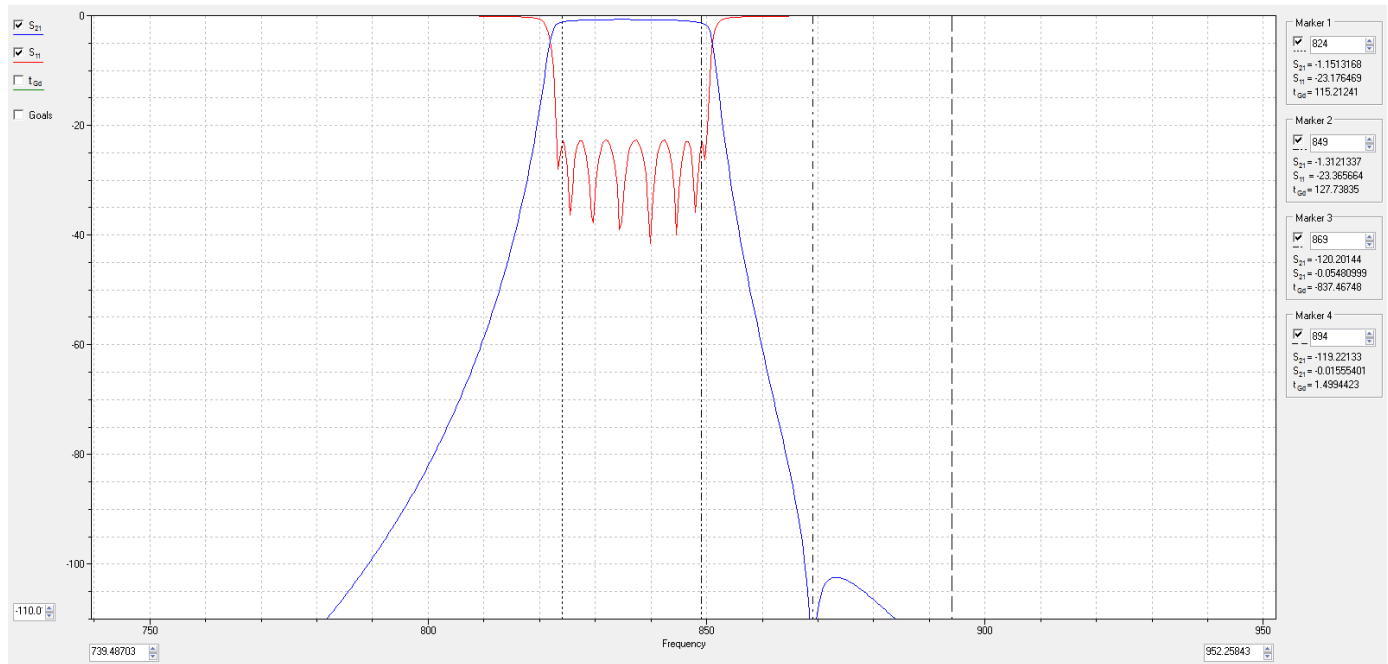
HD34207

Cavity Duplexer

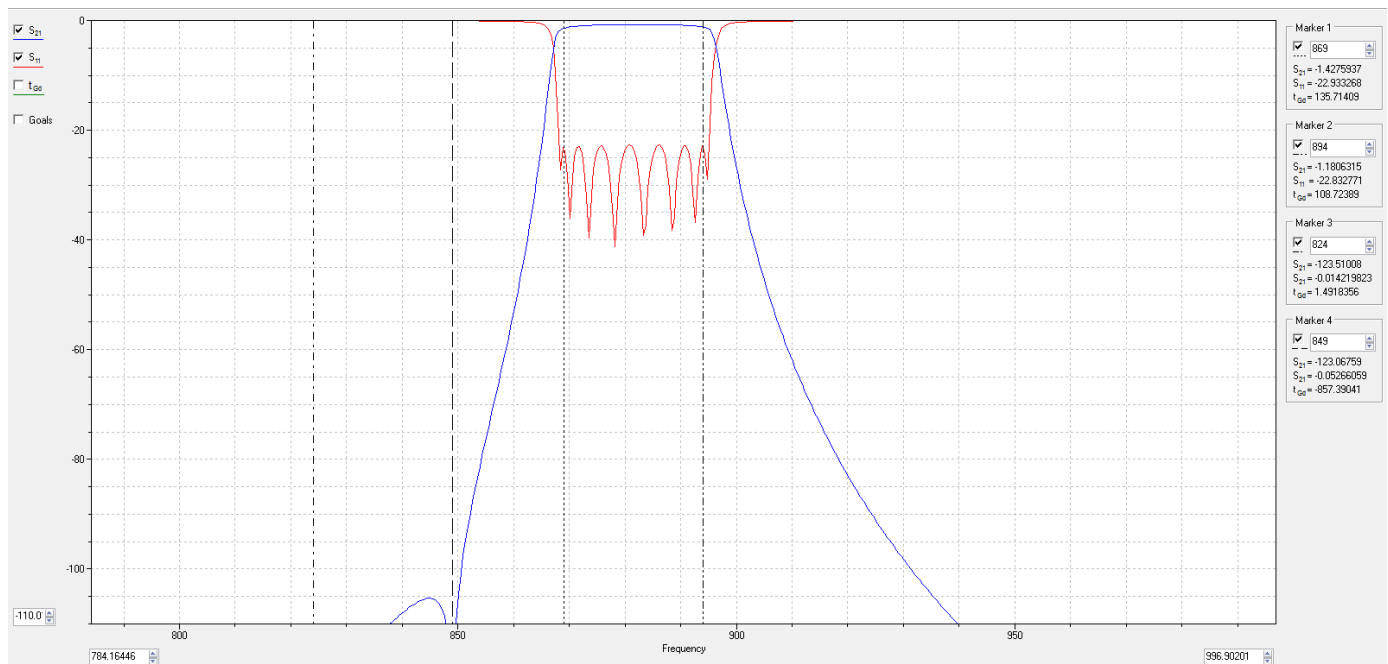
■ **Electrical Specification**

Items	Specification		Remark
Center Frequency	836.5MHz	881.5MHz	
Frequency Range	824~849MHz	869~894MHz	
Insertion Loss	1.6dB max		
Pass band Flatness	±0.1 dB across any 200 kHz bandwidth		
Pass band Phase Linearity	Deviation shall not exceed ±1 degree from straight line (constant group delay) in either Tx or Rx pass band across any 200 kHz bandwidth.		
Return Loss	18dB min		
Isolation	80dB min		
2 ND Harmonic	-70 dBc		TX
Lightning Protection	18 kA, IEC 1000-4-5, 8/20 µsec and 2.5 kA, IEC 1312-1, 10/350 µsec		
Coupling monitor	30 dB ±1.0 dB		TX
PIMD	-150dBc@20W 2tone.		
Power rating	120W Max. / Peak 1440W		
Impedance	50 Ω		
Connector	N(F) : ANT , TX / SMA(F) : RX , CPL		
Dimension(WxDxH)	130.0 x 159.0 x 76.0		mm
Weight	Less than 20lbs		
Operating Temperature	-40°C ~ 85°C		
Finish	Epoxy Black		

■ Simulation Data



RX path



TX path

338 Jericho Tpke. Ste 387, Syosset, NY 11791

Tel: (631) 588-3877 Email: sales@hdcom.com

© COPYRIGHT 2008-2023 HD Communications Corp.

All rights reserved. Redistribution or republication of these pages in any form requires express written consent.